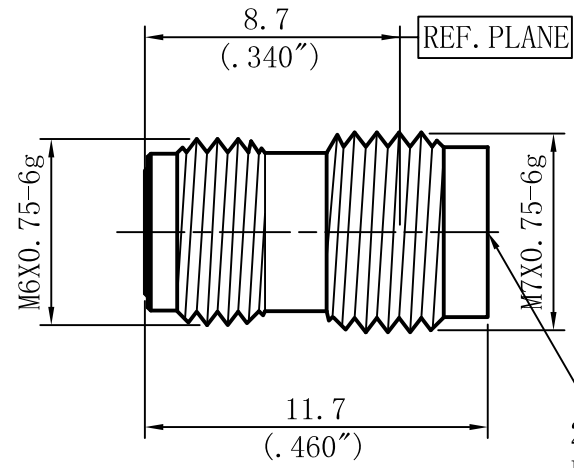


1 2 3 4 5 6

A

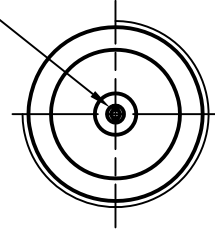
B

C



2.4mm
Female

SOCKET TO ACCEPT $\phi 0.51(.020)$ PIN
2(.079") MAX DEPTH



Performance Features:

Nominal Impedance: 50Ω
Frequency Range: DC-50GHz
VSWR: DC-50GHz.... 1.15:1 (Max)

Materials/Finishes:

Housing: SU303F
 Polished & Passivated
Center Contact: Beryllium Copper
 Gold Plated
Insulators: PEI

M MicrowaveTown Company, LLC
1283 E. Route 66 Ave.
Glendora, CA 91741
Tel: (626)241-9635
Fax: (626)698-1638
www.microwavetown.com

DIRECTION OF VIEW	UNIT	TITLE
	mm	2.4mm Connector

PROPRIETARY INFORMATION: THE INFORMATION IN THIS DRAWING IS PROPRIETARY AND SHALL NOT BE USED OR DISCLOSED WITHOUT PRIOR WRITTEN PERMISSION FROM MICROWAVETOWN

DRAWN	Shaoping Du
CHECKED	Haimin Zhang
APPR.	Gang Cao

DWG NO.	2.4mm Connector
---------	-----------------

UNLESS OTHERWISE SPECIFIED
1. REMOVE ALL BURRS, BREAK ALL CORNERS, SHARP EDGES 0.05 R MAX
2. LINEARITY TOLERANCES ±0.1; ANGLE TOLERANCES ±1°
3. DIAMETERS ON COMMON CENTERS TO BE CONCENTRIC WITHIN 0.1
4. ALL DIMENSIONS ARE AFTER PLATING. SURFACE FINISHED ✓

DWG NO.	D370S20Y02
---------	------------

OUTLINE DRAWING	
-----------------	--

LTR	DESCRIPTION	DATE	APPR.
-----	-------------	------	-------

DO NOT SCALE DRAWING

SIZE	A4_h	SCALE	4:1	REV.	V2.0	SHEET	1/1
------	------	-------	-----	------	------	-------	-----

1 2 3 4 5 6

A

B

C

D