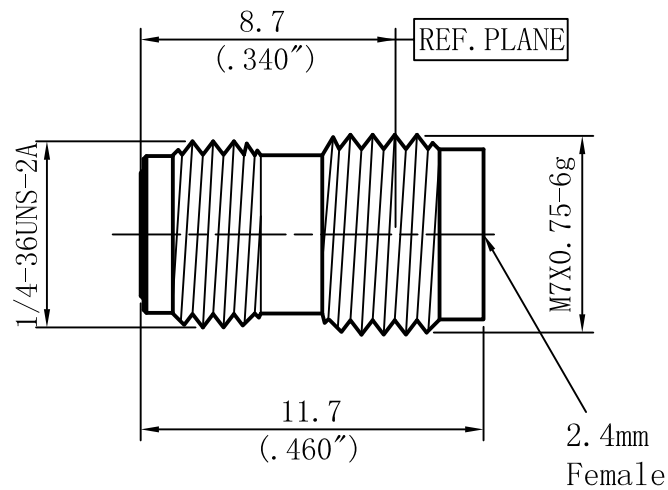


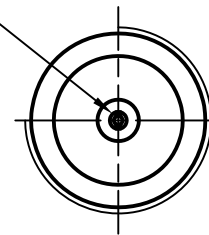
1 2 3 4 5 6

A

A



SOCKET TO ACCEPT  $\phi 0.23(.009)$  PIN  
2(.079") MAX DEPTH



B

B

C

C

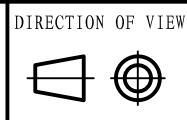
**Performance Features:**

Nominal Impedance: 50Ω  
Frequency Range: DC-50GHz  
VSWR: DC-50GHz.... 1.15:1 (Max)

**Materials/Finishes:**

Housing: SU303F  
Polished & Passivated  
Center Contact: Beryllium Copper  
Gold Plated  
Insulators: PEI

**M** MicrowaveTown Company, LLC  
1283 E. Route 66 Ave.  
Glendora, CA 91741  
Tel: (626)241-9635  
Fax: (626)698-1638  
www.microwavetown.com



UNIT  
mm

TITLE  
**2.4mm Connector**

PROPRIETARY INFORMATION: THE INFORMATION IN THIS DRAWING IS PROPRIETARY AND SHALL NOT BE USED OR DISCLOSED WITHOUT PRIOR WRITTEN PERMISSION FROM MICROWAVETOWN

DRAWN: Xin Gong  
CHECKED: Haimin Zhang  
APPR.: Gang Cao

DWG NO.  
**D370S09Y01**

UNLESS OTHERWISE SPECIFIED:  
1. REMOVE ALL BURRS, BREAK ALL CORNERS, SHARP EDGES 0.05 R MAX  
2. LINEARITY TOLERANCES ±0.1; ANGLE TOLERANCES ±1°  
3. DIAMETERS ON COMMON CENTERS TO BE CONCENTRIC WITHIN 0.1  
4. ALL DIMENSIONS ARE AFTER PLATING, SURFACE FINISHED ✓

**OUTLINE DRAWING**

LTR	DESCRIPTION	DATE	APPR.	DO NOT SCALE DRAWING	SIZE A4_h	SCALE 4:1	REV. V2.0	SHEET 1/1
-----	-------------	------	-------	----------------------	-----------	-----------	-----------	-----------

1 2 3 4 5 6

D

D