



SSMA Connector Series

Performance Features

Nominal Impedance: 50Ω

Frequency Range: DC-40GHz

VSWR: DC-40GHz... 1.20:1 (Max)

Durability: 500 Cycles

Operating Temperature: -60°C~+165°C

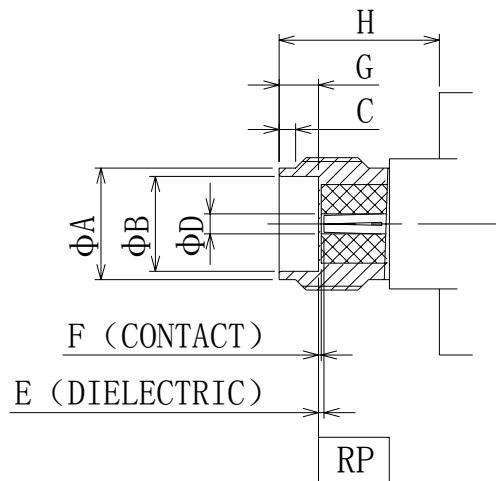
Materials/Finishes

Housing: Type 303 Stainless Steel - Polished & Passivated

Center Contact: Beryllium Copper Plated Gold

Insulators: PEI&PTFE

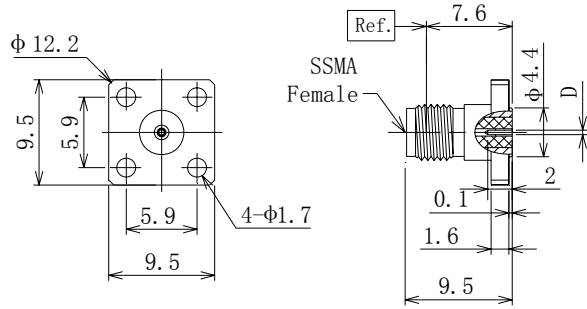
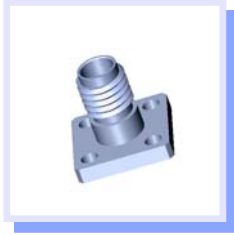
Interfaces: Per MIL-STD-348A



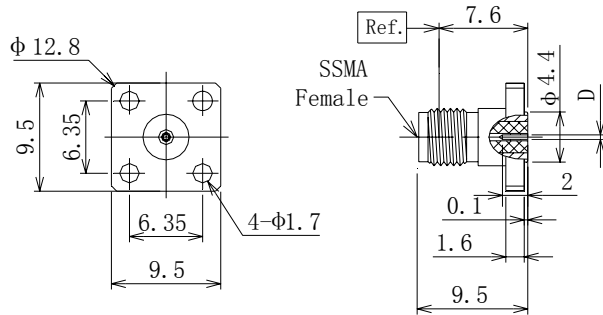
SSMA Female (mm)		
LTR	MINIMUM	MAXIMUM
A	3.85	4.05
B	3.23	3.28
C	0.9	1.1
D	0.8373	0.8627
E	0	0.03
F	0	0.04
G	1.79	1.
H	7.8	8.0



SSMA Series Field Replaceable Flange Connectors



P/N	D
D570S12F02	0.012 inch/0.30mm
D570S15F02	0.015 inch/0.38mm
D570S18F02	0.018 inch/0.46mm
D570S20F02	0.020 inch/0.51mm



P/N	D
D570S12F03	0.012 inch/0.30mm
D570S15F03	0.015 inch/0.38mm
D570S18F03	0.018 inch/0.46mm
D570S20F03	0.020 inch/0.51mm