



2.4mm Connector Series

Performance Features

Nominal Impedance: 50Ω

Frequency Range: DC-50GHz

VSWR: DC-50GHz... 1.15:1 (Max)

Durability: 500 Cycles

Operating Temperature: -60°C~+165°C

Materials/Finishes

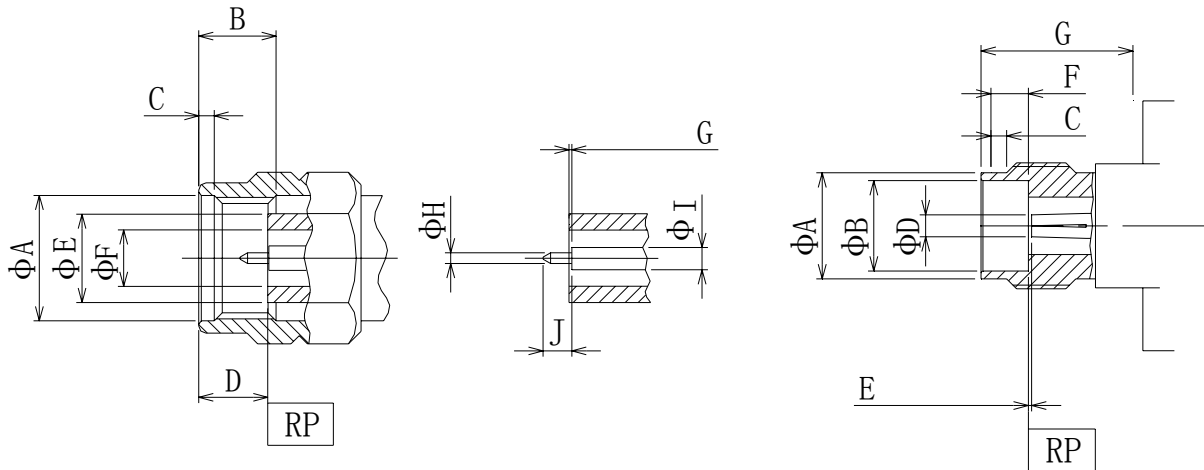
Housing: Type 303 Stainless Steel - Polished & Passivated

Center Contact: Beryllium Copper Plated Gold

Insulators:PEI

Interfaces: Per MIL-STD-348A

Interface Standards

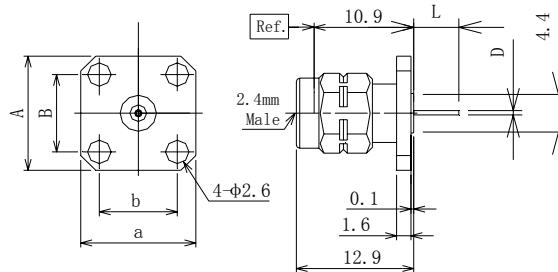


2.4mm Male (mm)		
LTR	MINIMUM	MAXIMUM
A	7.05	7.15
B	4	
C	0.8	
D	1.7	1.9
E	4.725	4.750
F	2.385	2.415
G	0	0.055
H	0.49	0.51
I	1.032	1.052
J	1.305	1.45

2.4mm Female (mm)		
LTR	MINIMUM	MAXIMUM
A	5.7	5.9
B	4.770	4.795
C	1.4	1.6
D	1.12	1.14
E	0	0.055
F	3	3.08
G	6.4	

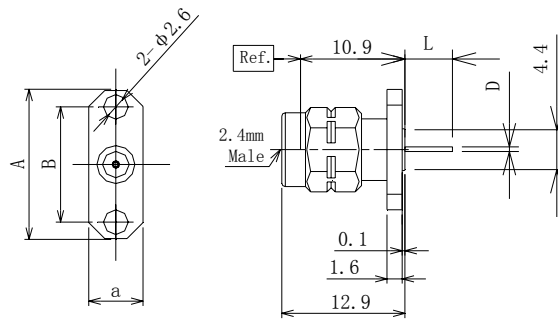


2.4mm Series Bulkhead Flange Connectors



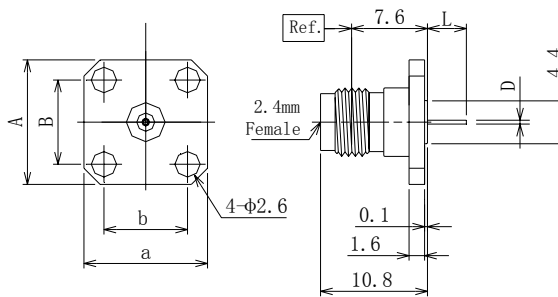
P/N	A	a	B	b
D371TLXF01	12.7	12.7	8.6	8.6
D371TLXF02	9.5	9.5	6.35	6.35
D371TLXF03	12.7	9.5	8.64	5.64

Notes: D/L Customized



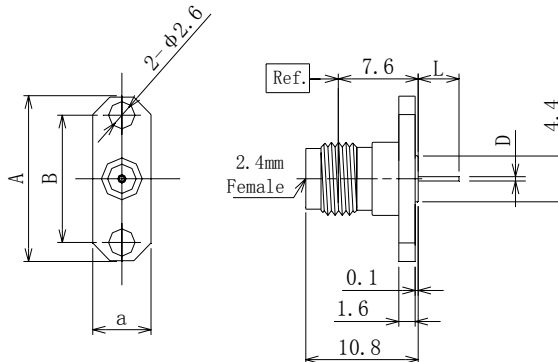
P/N	A	B
D371TLXF04	15.8	12.2
D371TLXF05	14	10.2
D371TLXF06	12.7	8.9

Notes: D/L Customized



P/N	A	a	B	b
D370TLXF01	12.7	12.7	8.6	8.6
D370TLXF02	9.5	9.5	6.35	6.35
D370TLXF03	12.7	9.5	8.64	5.64

Notes: D/L Customized



P/N	A	B
D370TLXF04	15.8	12.2
D370TLXF05	14	10.2
D370TLXF06	12.7	8.9

Notes: D/L Customized