



## 2.92mm Connector Series

### Performance Features

Nominal Impedance: 50Ω

Frequency Range: DC-40GHz

VSWR: DC-40GHz... 1.15:1 (Max)

Durability: 500 Cycles

Operating Temperature: -60°C~+165°C

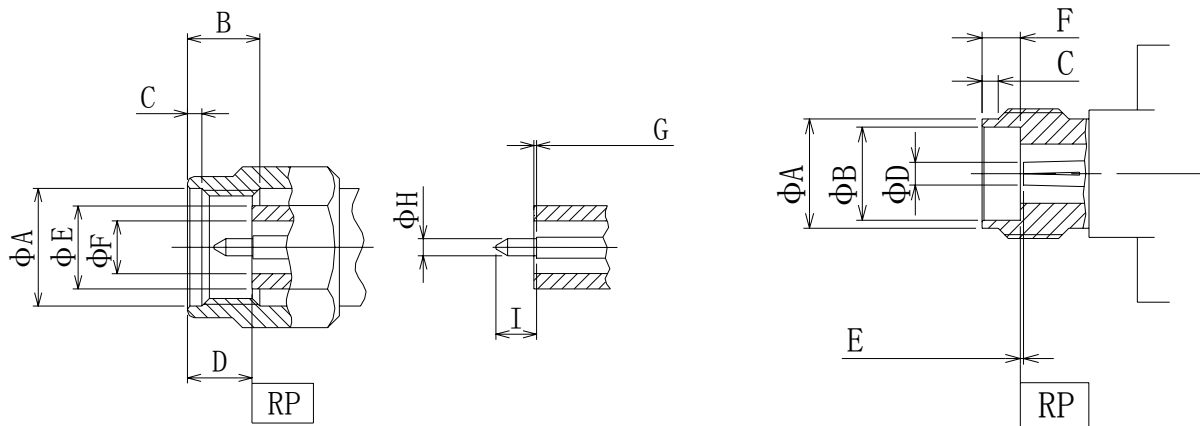
### Materials/Finishes

Housing: Type 303 Stainless Steel - Polished & Passivated

Center Contact: Beryllium Copper Plated Gold

Insulators:PEI

**Interfaces:PER MIL-STD-348A**

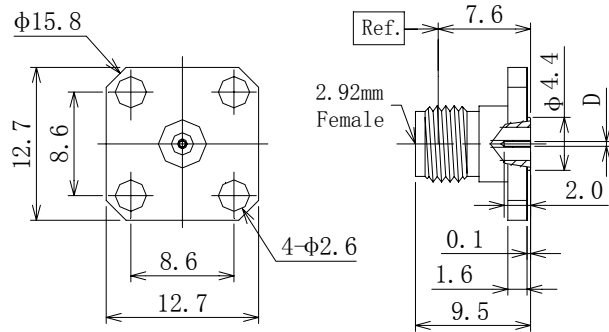


| 2.92mm Male (mm) |         |         |
|------------------|---------|---------|
| LTR              | MINIMUM | MAXIMUM |
| A                | 6.5     | 6.6     |
| B                | 4       |         |
| C                | 0.8     |         |
| D                | 2.82    | 3.18    |
| E                | 4.55    | 4.58    |
| F                | 2.90    | 2.94    |
| G                | 0       | 0.06    |
| H                | 0.920   | 0.934   |
| I                | 1.295   | 1.450   |

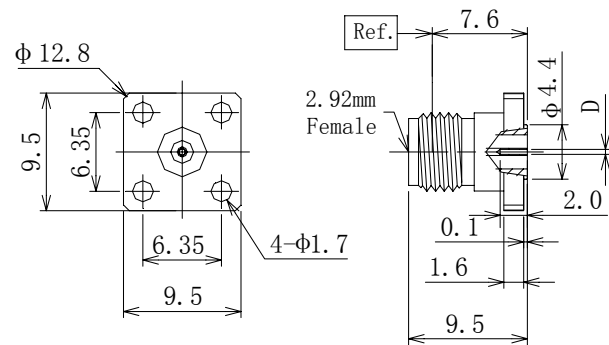
| 2.92mm Female (mm) |         |         |
|--------------------|---------|---------|
| LTR                | MINIMUM | MAXIMUM |
| A                  | 5.324   | 5.400   |
| B                  | 4.60    | 4.63    |
| C                  | 0.8     | 0.9     |
| D                  | 1.26    | 1.28    |
| E                  | 0       | 0.078   |
| F                  | 1.855   | 1.993   |



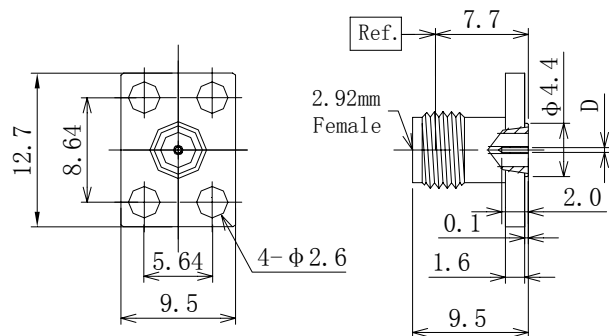
## 2.92mm Series Field Replaceable Flange Connectors



| P/N        | D                 |
|------------|-------------------|
| D360S12F01 | 0.012 inch/0.30mm |
| D360S15F01 | 0.015 inch/0.38mm |
| D360S18F01 | 0.018 inch/0.46mm |
| D360S20F01 | 0.020 inch/0.51mm |



| P/N        | D                 |
|------------|-------------------|
| D360S12F02 | 0.012 inch/0.30mm |
| D360S15F02 | 0.015 inch/0.38mm |
| D360S18F02 | 0.018 inch/0.46mm |
| D360S20F02 | 0.020 inch/0.51mm |



| P/N        | D                 |
|------------|-------------------|
| D360S12F03 | 0.012 inch/0.30mm |
| D360S15F03 | 0.015 inch/0.38mm |
| D360S18F03 | 0.018 inch/0.46mm |
| D360S20F03 | 0.020 inch/0.51mm |